

ADVERTISING TOTEM KIOSK (Digital Signage)

SAT Ki49 / Ki55



FEATURES

- ✓ Modern and durable design.
- ✓ Ideal for digital signage solutions.
- ✓ Built on a durable aluminum chassis and frame.
- ✓ Long-lasting multi-touch screen technology.
- ✓ Floor installation as a traffic-stopping display.
- ✓ Available in two sizes: 49-inch and 55-inch screens.
- ✓ Designed for heavy-duty 24/7 operation.

DESCRIPTION

SAT Interactive Kiosks: Redefining Customer Engagement with the K149 & K155 Models.

Experience the future of customer interaction with SAT's floor-standing touchscreen totem kiosks—innovative self-service solutions designed to transform engagement across industries. The K149 and K155 models combine sleek, modern design with robust functionality, offering an intuitive touch interface that empowers users to seamlessly navigate digital content, access real-time product details, and complete transactions autonomously.

Manufactured to the highest industrial quality standards, these kiosks withstand continuous use in demanding commercial environments. Engineered with durable materials and cutting-edge technology, they deliver reliable 24/7 operation.

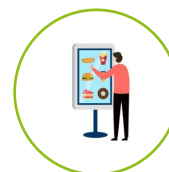


Software Compatibility:

The advertising kiosk line offers specialized software compatibility for digital content management.

Self-Service:

Ideal for end-user self-service applications, these kiosks support digital signage operations and information displays in malls, banks, and transportation terminals.



Touch Operation:

Features an industrial-grade multi-touch screen with high durability and environmental resilience for demanding settings.

High-Resolution Display:

Equipped with Full HD (FHD/1080p) resolution - the current industry standard for crisp visual performance.



Heavy-Duty Performance:

Engineered for flawless 24/7 continuous operation under extreme conditions.

MARKETS AND APPLICATIONS



Supermarkets



Restaurants



Movie Theaters



Hospitals



Airlines



Malls



Transport terminal



Banks



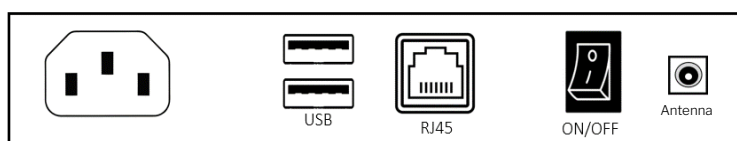
Education





SPECIFICATIONS		DESCRIPTION		
Model (Ref.)		SAT Ki49		SAT Ki55
System	Generation	Intel® Core™ i5-4200U 4th Generation	Intel® Core™ i5-6200U 6th Generation	Intel® Core™ i5-6200U 6th Generation
	Graphics	Intel® HD Graphics 4400	Intel® HD Graphics 520	Gráficos Intel® HD 520
	Base Speed	1.6 GHz	2.30 GHz	2.30 GHz
	Turbo Speed	Up to 2.6 GHz	Up to 2.80 GHz	Up to 2.80 GHz
	Core Count	2	2	2
	Thread Count	4	4	4
	Memory	4GB (Optional 8GB) - DDR4 2,133 MHz (2 slots) up to 32GB		
	Storage	128GB (Optional 256GB) / mSATA SSD		
	Cooling System	Heat dissipation (FAN)		
	OS Compatibility	LINUX, WINDOWS 10, 11 (Not included)		
Bezel / Touch	Display	Full HD LCD Panel		
	Size	49 inches (16:9)		55 inches (16:9)
	Resolution	1920*1080 Mpx		
	Brightness	400 nits		
	Viewing Angle	H:178° / V:178°		
	Response Time	4-9 ms		
	Panel Lifespan	50,000 hours		
	Touch Technology	Infrared Multi-touch		
	Touch Points	10-point touch		
Interface / Connectivity	Ethernet	1x RJ45 10/100/1000 Mbps		
	Wifi / Bluetooth	Wifi 2.4GHz - 802.11n (External antenna)		
	Video Output	/		
	USB	2x USB 2.0		
	COM	/		
	Audio	Audio 2x 4W Speakers		
	RJ11	/		
General	Input	110 V-240 V, 50 HZ/60 HZ		
	Operating Temp.	-10°C ~ 65°C, 10% ~ 90% RH		
	Certifications	CE, FCC		
	Dimensions	185cm (L) x 79cm (W) x 44.7cm (H)		190cm (L) x 79cm (W) x 44.7cm (H)
	Package Size	190cm (L) x 85cm (W) x 50cm (H)		195cm (L) x 85cm (W) x 50cm (H)
	Weight	70.0 kg		73.0 kg
	Floor stand	Stand Stainless steel base (removable)		

Specifications are subject to change without prior notice. Please read the instruction manual carefully to ensure proper use of the equipment.





LIGHTWEIGHT & ELEGANT DESIGN

A sleek, lightweight, and industrial design. Featuring a new ultra-slim profile, it's ideal for all installation environments requiring self-service operation.

Crafted with high-durability tempered glass and a full metal casing, this design guarantees long-lasting performance in demanding settings.

INTERACTIVE OPERATION

The advertising kiosk line, available in 49" or 55" versions, delivers fully interactive functionality through infrared touchscreen technology.

Featuring 10-point multi-touch capability, these kiosks support seamless operation of any software for digital content management.



DIGITAL CONTENT MANAGEMENT

The kiosks (or totems) offer software compatibility for digital signage and content management. Their 49" or 55" screens enable crisp digital content display and projection.

INDUSTRIAL CONSTRUCTION

The advertising kiosks or totems are engineered with a high-strength steel chassis. Their full metal casing ensures long-lasting durability, while tempered glass safeguards the display panel against impacts and wear.

