

PRICE CHECKER ANDROID

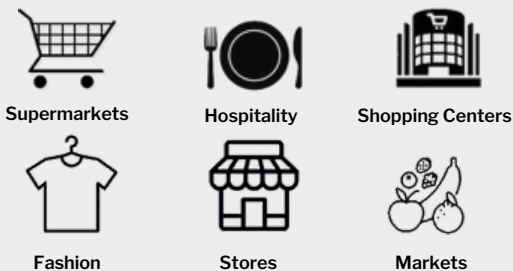
SAT VP310L N3



FEATURES

- Modern and compact design
- Ideal for point of sale and price-checking
- Durable plastic construction
- 24/7 operation capability
- Long-lasting interactive touch technology
- Versatile connectivity with various interfaces
- Compatible with a wide range of POS peripherals
- Suitable for small, medium, and large businesses

INDUSTRIES



DESCRIPTION

Introducing SAT's latest addition to our equipment lineup, the SAT VP310L – a comprehensive and robust solution designed for price-checker POS systems. Whether you're running a store, market, fashion outlet, warehouse, restaurant, or any other business, this device delivers dependable and efficient performance to meet your demanding needs.

The SAT VP310L model features an Intel Celeron processor, making it an ideal choice for price-checking systems in retail environments. Its compact, lightweight design ensures easy installation and seamless integration into your existing POS setup. With versatile interface connectivity, you can effortlessly connect various peripherals like printers, barcode readers, cash drawers, and card readers. SAT's industrial-grade equipment is built to last, boasting a 10.1" multitouch screen with a sleek border-to-border glass design that's resistant to liquid splashes.



Software Compatibility: The SAT VP310L price checker ensures seamless compatibility and optimal performance with a wide range of POS software or programs.

Code Reader: The VP310L price checkers incorporate 1D and 2D code reader technology within their structure, enabling efficient scanning of both linear and QR codes.



Touchscreen Display: With user-friendly operation in mind, the new VP310L features an LCD touchscreen, ensuring agile and practical functionality for users.

Heavy-Duty Performance: An ideal unit for operating in the toughest conditions, capable of running 24/7, seven days a week, without interruption.



Operating System OS: The new SAT price checker, designed to work with the processor's architecture, is intended to run on the Windows operating system (NOT included).



SPECIFICATION		DESCRIPTION
System	Processor	Intel® Celeron N3350, N Series
	Speed	1.10 GHz
	Turbo Speed	2.40 GHz
	Core	2
	Hard Drive	64GB (Optional 128GB) - eMMC
	Memory	4GB DDR3 on board
	Graphics	Intel® HD 500
	Refrigeration System	Fanless
	S.O.	Windows 10 IOT (Not Included)
Screen	LCD	LCD - TFT
	Size	10.1" (16:9)
	Resolution	1280 x 800
	Brightness	350 nits
	MBTF	30,000 hours
	Touch	PCAP Multitouch
	Mounting	VESA 75 x 75 mm
Interface	Ethernet	1x RJ45 10/100/1000 mps
	WiFi	Optional
	Video	1x HDMI
	USB/ Micro USB	2x 2.0 USB, 2x 3.0 - USB/ 1x Micro USB
	COM	1x COM, RJ50
	Cash Drawer	1x RJ11
Barcode	Technology	1D & 2D
	Speed Reading	270 scan/s
	Interface Connection	USB Connection
General	Power Supply	12 VDC/ 60 Watts
	Audio	2x Speaker (2W)
	Work Environment	0°C ~ 40°C, 20% ~ 80% RH (Operating) -20°C ~ 60°C, 10% ~ 90% RH (Storage)
	Certifications	CE, FCC
	Dimensions	15.8" x 13" x 2"
	Weight	1.2 kg

Specifications are subject to change without prior notice.

Please read the instruction manual carefully to ensure proper use of the equipment.