

# TOTEM TICKETING KIOSK (DIGITAL SIGNAGE)

## SAT KT21



### FEATURES

- Modern, sleek, and lightweight design.
- Ideal for queue/ticket management and control solutions.
- Compatible with queue/ticket management software.
- High-durability multi-touch screen technology.
- Fixed installation at strategic control points.
- Standard and ideal size with a 21-inch screen.
- Built for heavy-duty 24/7 operation.

### DESCRIPTION

In the SAT KT21 kiosks, you'll find a comprehensive solution to streamline queue management and elevate the customer experience. This sleek floor-standing kiosk offers seamless compatibility with all types of cutting-edge queue management software. Equipped with a high-performance 1D/2D barcode reader, our totem ensures fast and accurate identification, simplifying operations and enabling customized ticket assignments. Additionally, the integrated thermal receipt printer generates detailed queue tickets, keeping customers informed at every step.

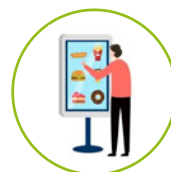
Beyond optimizing wait times, the SAT KT21 kiosk doubles as a digital signage platform, allowing you to showcase promotions, products, and services on its vibrant 21-inch high-resolution touchscreen.

Built with a modern, industrial design and engineered to the highest industrial quality standards, this totem is crafted to withstand continuous use in demanding commercial environments. Constructed from durable, heavy-duty materials, it guarantees reliable 24/7 operation, day in and day out.



**Software Compatibility:** The SAT KT21 kiosk is fully compatible with all types of Windows-based queue/ticket management software, ensuring seamless integration into existing systems.

**Self-Service Solution:** Designed for end-user autonomy, it excels in digital signage and informational applications across commercial centers, banks, and transportation hubs.



**Touch Operation:** Features an industrial-grade multi-touch screen with high durability and resistance, enabling intuitive and reliable interaction.

**Peripherals:** The turn management solution includes integrated peripherals such as barcode scanners and thermal printers for efficient code reading and ticket printing.



**Heavy-Duty Performance:** Built to withstand the most demanding environments, this kiosk guarantees uninterrupted 24/7 operation, even under prolonged use.

### TARGET MARKETS AND USES



Supermarkets



Restaurants



Movie Theaters



Hospitals



Airlines



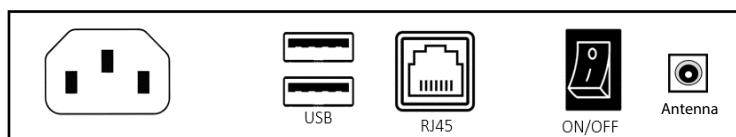
Malls





SPECIFICATIONS		DESCRIPTION	
MODEL (REF)		SAT KT 21	
SYSTEM	Processor	Intel® Core™ i5-6200U	Intel Core i5-1135G7
	Generation	6th Generation	11 th Generation
	Graphics	Intel® HD 520 Graphics	Iris Xe G7 (80EU)
	Basic Speed	2.30 GHz	2.4 GHz
	Turbo Speed	Up to 2.80 GHz	Up to 4.2 GHz
	Cores	2	4
	Threads	4	8
	RAM Memory	4GB (Optional 8GB) - DDR4 2133 MHz	4GB (Optional 8GB) - DDR4 2133 MHz
	Storage	128GB SSD (Optional 256GB) / Mini	128GB SSD (Optional 256GB) / Mini-
	Cooling System	Heat dissipation (FAN)	Heat dissipation (FAN)
	Operative System	Compatible with UNIX, Windows 10, 11	Compatible with UNIX, Windows 10, 11
DISPLAY / TOUCH	Display	Full HD LCD Panel	
	Size	21" inches (16:9)	
	Resolution	1920 x 1080 pixels	
	Brightness	400 nits	
	Viewing angle	H:178° / V:178°	
	Response Time	4-9 ms	
	Screen lifespan	50,000 hours	
	Touch Screen	Industrial Multi-touch	
	Touch Points	10 points	
INTERFACE / CONNECTIVITY	Ethernet	RJ45 10/100/1000 Mbps	
	Wi-Fi / Bluetooth	2.4GHz WiFi - 802.11n (External Antenna)	
	Output Video	/	
	USB	2x USB 2.0	
	COM	/	
	AUDIO	2x 4W Speakers	
GENERAL	Power Supply	AC 110 V-240 V, 50 Hz/60 Hz	
	Operating Temperature	-10°C ~ 65°C, 10% ~ 90% RH	
	Certifications	CE, FCC	
	Dimensions	132.5 cm (L) x 55.2 cm (W) x 34.5 cm (H)	
	Packing dimensions	60.0 cm (L) x 120.0 cm (W) x 60.0 cm (H)	
	Weight	50.0 kg	
	Floor Base	Rigid Steel Floor Stand	
EMBEDDED PERIPHERALS	Printing Thermal Head	Printing technology	Printing Thermal head / 150
		Resolution	8 dots / mm
		Speed	250 mm/s
		Paper width	58 mm / 80 mm
		Paper Length	80 millimeters
		Autocutters	Automatic cutting / up to 1,000,000
		Interface	USB Connection
	Barcode Scanner	Printer Lifespan	Over 150 km of printing
		Technology	1D - 2D (pdf 417 / OCR)
		Resolution	1280 x 800 Pixels
		Scanning Speed	350 mm/s
		Inteface	USB Connection

Specifications are subject to change without notice. Please read the instruction manual carefully to ensure correct use of the equipment





## ELEGANT AND INDUSTRIAL DESIGN

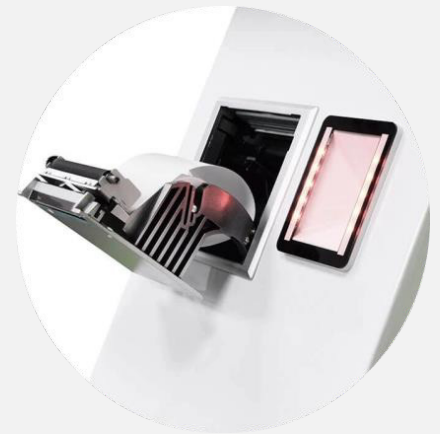
A sleek, lightweight, and ergonomic design featuring a modern curved structure and medium height, ideal for all types of users in self-service operations at hospitals, healthcare centers, or clinics.

Crafted with durable metal construction, this design ensures reliable performance in harsh environments and continuous 24/7 operation.

## THERMAL PRINTER

Integrated into its structure is a built-in 1D/2D omnidirectional barcode reader.

This type of scanner supports reading standard basic barcodes, as well as advanced formats like PDF417 and OCR (Optical Character Recognition), making it ideal for scanning ID documents and passports



## BARCODE SCANNER

Equipped with an embedded 1D/2D barcode scanner and omnidirectional reading capabilities, this device supports scanning from conventional barcodes to advanced PDF-417 and OCR codes. Ideal for reading IDs, passports, and complex documents.

## DESIGN AND CONSTRUCTION

Built with industrial-grade steel for exceptional durability, this kiosk is designed to withstand heavy-duty self-service use. The rear panel includes two lockable access doors for easy maintenance, inspection, and operational adjustments.

